

AvantGarde Book

abcdefghijklmnopqrstuvwxyz ff ffi ffl fi fl æœǎçþtøß
ABCDEFGHIJKLMNOPQRSTUVWXYZ
&ÆŒǺÇÐÞŁØ@ 1234567890
.,:; ‘ ’ “ ” « » ! ? - () { } - — \$ ¢ £ ¥ ¤ * † ‡ § ¶ | ¿
ÉÈÊËĚĚĚĚĚéèêëěěě

AvantGarde Book Oblique

*abcdefghijklmnopqrstuvwxyz ff ffi ffl fi fl æœǎçþtøß
ABCDEFGHIJKLMNOPQRSTUVWXYZ
&ÆŒǺÇÐÞŁØ@ 1234567890
.,:; ‘ ’ “ ” « » ! ? - () { } - — \$ ¢ £ ¥ ¤ * † ‡ § ¶ | ¿
ÉÈÊËĚĚĚĚĚéèêëěěě*

AvantGarde Demi

**abcdefghijklmnopqrstuvwxyz ff ffi ffl fi fl æœǎçþtøß
ABCDEFGHIJKLMNOPQRSTUVWXYZ
&ÆŒǺÇÐÞŁØ@ 1234567890
.,:; ‘ ’ “ ” « » ! ? - () { } - — \$ ¢ £ ¥ ¤ * † ‡ § ¶ | ¿
ÉÈÊËĚĚĚĚĚéèêëěěě**

AvantGarde Demi Oblique

***abcdefghijklmnopqrstuvwxyz ff ffi ffl fi fl æœǎçþtøß
ABCDEFGHIJKLMNOPQRSTUVWXYZ
&ÆŒǺÇÐÞŁØ@ 1234567890
.,:; ‘ ’ “ ” « » ! ? - () { } - — \$ ¢ £ ¥ ¤ * † ‡ § ¶ | ¿
ÉÈÊËĚĚĚĚĚéèêëěěě***

Bookman Light

abcdefghijklmnopqrstuvwxyzz ff ffi ffl fi fl æœâçþłøß
ABCDEFGHIJKLMNOPQRSTUVWXYZ
&ÆŒĀČĐPŁØ@ 1234567890
.,:; “ ” «»! ? - 0 [] {} - — \$¢£¥ƒ *†‡§¶ı¿
ÉÈÊËĚĚĚĚĚéèêëěěě

Bookman Light Italic

*abcdefghijklmnopqrstuvwxyzz ff ffi ffl fi fl æœâçþłøß
ABCDEFGHIJKLMNOPQRSTUVWXYZ
&ÆŒĀČĐPŁØ@ 1234567890
.,:; “ ” «»! ? - 0 [] {} - — \$¢£¥ƒ *†‡§¶ı¿
ÉÈÊËĚĚĚĚĚéèêëěěě*

Bookman Demi

**abcdefghijklmnopqrstuvwxyzz ff ffi ffl fi fl æœâçþłøß
ABCDEFGHIJKLMNOPQRSTUVWXYZ
&ÆŒĀČĐPŁØ@ 1234567890
.,:; “ ” «»! ? - 0 [] {} - — \$¢£¥ƒ *†‡§¶ı¿
ÉÈÊËĚĚĚĚĚéèêëěěě**

Bookman Demi Italic

***abcdefghijklmnopqrstuvwxyzz ff ffi ffl fi fl
æœâçþłøß
ABCDEFGHIJKLMNOPQRSTUVWXYZ
&ÆŒĀČĐPŁØ@ 1234567890
.,:; “ ” «»! ? - 0 [] {} - — \$¢£¥ƒ *†‡§¶ı¿
ÉÈÊËĚĚĚĚĚéèêëěěě***

Courier

abcdefghijklmnopqrstuvwxyz ff ffi ffl fi fl æåçþ løß
ABCDEFGHIJKLMNOPQRSTUVWXYZ
&ÆÅÇÐÞLØ@ 1234567890
.,:; ' ' ' ' «»!? - () [] {} -- --- \$ç£¥f *†‡\$¶!`?'`
ÉÈÊËÛËËËËËéèêëëëëë

Courier Oblique

*abcdefghijklmnopqrstuvwxyz ff ffi ffl fi fl æåçþ løß
ABCDEFGHIJKLMNOPQRSTUVWXYZ
&ÆÅÇÐÞLØ@ 1234567890
.,:; ' ' ' ' «»!? - () [] {} -- --- \$ç£¥f *†‡\$¶!`?'`
ÉÈÊËÛËËËËËéèêëëëëë*

Courier Bold

**abcdefghijklmnopqrstuvwxyz ff ffi ffl fi fl æåçþ løß
ABCDEFGHIJKLMNOPQRSTUVWXYZ
&ÆÅÇÐÞLØ@ 1234567890
.,:; ' ' ' ' «»!? - () [] {} -- --- \$ç£¥f *†‡\$¶!`?'`
ÉÈÊËÛËËËËËéèêëëëëë**

Courier Bold Oblique

***abcdefghijklmnopqrstuvwxyz ff ffi ffl fi fl æåçþ løß
ABCDEFGHIJKLMNOPQRSTUVWXYZ
&ÆÅÇÐÞLØ@ 1234567890
.,:; ' ' ' ' «»!? - () [] {} -- --- \$ç£¥f *†‡\$¶!`?'`
ÉÈÊËÛËËËËËéèêëëëëë***

Helvetica

abcdefghijklmnopqrstuvwxyzz ff ffi ffl fi fl æœåçþłøß
ABCDEFGHIJKLMNOPQRSTUVWXYZ
&ÆŒÅÇÐÞŁØ@ 1234567890
.,:; “ ” « < > » ! ? - () [] { } – — \$ ¢ £ ¥ ¤ * † ‡ § ¶ | ¡ ¢
É È Ê Ë Ì Í Î Ï Ñ Ò Ó Ô Õ Ö × Ø Ù Ú Û Ü Ý Þ ß à á â ã

Helvetica Oblique

*abcdefghijklmnopqrstuvwxyzz ff ffi ffl fi fl æœåçþłøß
ABCDEFGHIJKLMNOPQRSTUVWXYZ
&ÆŒÅÇÐÞŁØ@ 1234567890
.,:; “ ” « < > » ! ? - () [] { } – — \$ ¢ £ ¥ ¤ * † ‡ § ¶ | ¡ ¢
É È Ê Ë Ì Í Î Ï Ñ Ò Ó Ô Õ Ö × Ø Ù Ú Û Ü Ý Þ ß à á â ã*

Helvetica Bold

**abcdefghijklmnopqrstuvwxyzz ff ffi ffl fi fl æœåçþłøß
ABCDEFGHIJKLMNOPQRSTUVWXYZ
&ÆŒÅÇÐÞŁØ@ 1234567890
.,:; “ ” « < > » ! ? - () [] { } – — \$ ¢ £ ¥ ¤ * † ‡ § ¶ | ¡ ¢
É È Ê Ë Ì Í Î Ï Ñ Ò Ó Ô Õ Ö × Ø Ù Ú Û Ü Ý Þ ß à á â ã**

Helvetica Bold Oblique

***abcdefghijklmnopqrstuvwxyzz ff ffi ffl fi fl æœåçþłøß
ABCDEFGHIJKLMNOPQRSTUVWXYZ
&ÆŒÅÇÐÞŁØ@ 1234567890
.,:; “ ” « < > » ! ? - () [] { } – — \$ ¢ £ ¥ ¤ * † ‡ § ¶ | ¡ ¢
É È Ê Ë Ì Í Î Ï Ñ Ò Ó Ô Õ Ö × Ø Ù Ú Û Ü Ý Þ ß à á â ã***

Helvetica Narrow

abcdefghijklmnopqrstuvwxy ff ffi ffl fi fl æœåçþłøß
ABCDEFGHIJKLMNOPQRSTUVWXYZ
&ÆŒÅÇÐŁØ@ 1234567890
.,:; “ ” « » ! ? - () [] { } - — \$ ¢ £ ¥ f * † ‡ § ¶ i ÷
É È Ê Ë Ì Í Î Ï Ñ Ò Ó Ô Õ Ö × Ø Ù Ú Û Ü Ý Þ ß

Helvetica Narrow Oblique

abcdefghijklmnopqrstuvwxy ff ffi ffl fi fl æœåçþłøß
ABCDEFGHIJKLMNOPQRSTUVWXYZ
&ÆŒÅÇÐŁØ@ 1234567890
.,:; “ ” « » ! ? - () [] { } - — \$ ¢ £ ¥ f * † ‡ § ¶ i ÷
É È Ê Ë Ì Í Î Ï Ñ Ò Ó Ô Õ Ö × Ø Ù Ú Û Ü Ý Þ ß

Helvetica Narrow Bold

abcdefghijklmnopqrstuvwxy ff ffi ffl fi fl æœåçþłøß
ABCDEFGHIJKLMNOPQRSTUVWXYZ
&ÆŒÅÇÐŁØ@ 1234567890
.,:; “ ” « » ! ? - () [] { } - — \$ ¢ £ ¥ f * † ‡ § ¶ i ÷
É È Ê Ë Ì Í Î Ï Ñ Ò Ó Ô Õ Ö × Ø Ù Ú Û Ü Ý Þ ß

Helvetica Narrow Bold Oblique

abcdefghijklmnopqrstuvwxy ff ffi ffl fi fl æœåçþłøß
ABCDEFGHIJKLMNOPQRSTUVWXYZ
&ÆŒÅÇÐŁØ@ 1234567890
.,:; “ ” « » ! ? - () [] { } - — \$ ¢ £ ¥ f * † ‡ § ¶ i ÷
É È Ê Ë Ì Í Î Ï Ñ Ò Ó Ô Õ Ö × Ø Ù Ú Û Ü Ý Þ ß

New Century Schoolbook Roman

abcdefghijklmnopqrstuvwxyzz ff ffi ffl fi fl æœâçþłøß

ABCDEFGHIJKLMNOPQRSTUVWXYZ

&ÆĀÇĐPŁ@ 1234567890

.,; “ ” « » ! ? - () [] { } - — \$ ¢ £ ¥ f * † ‡ § ¶ i ÷

ÉÈÊËĚĚĚĚĚéèêëěěě

New Century Schoolbook Italic

abcdefghijklmnopqrstuvwxyzz ff ffi ffl fi fl æœâçþłøß

ABCDEFGHIJKLMNOPQRSTUVWXYZ

&ÆĀÇĐPŁ@ 1234567890

*.,; “ ” « » ! ? - () [] { } - — \$ ¢ £ ¥ f * † ‡ § ¶ i ÷*

ÉÈÊËĚĚĚĚĚéèêëěěě

New Century Schoolbook Bold

abcdefghijklmnopqrstuvwxyzz ff ffi ffl fi fl æœâçþłøß

ABCDEFGHIJKLMNOPQRSTUVWXYZ

&ÆĀÇĐPŁ@ 1234567890

.,; “ ” « » ! ? - () [] { } - — \$ ¢ £ ¥ f * † ‡ § ¶ i ÷

ÉÈÊËĚĚĚĚĚéèêëěěě

New Century Schoolbook Bold Italic

abcdefghijklmnopqrstuvwxyzz ff ffi ffl fi fl æœâçþłøß

ABCDEFGHIJKLMNOPQRSTUVWXYZ

&ÆĀÇĐPŁ@ 1234567890

.,; “ ” « » ! ? - () [] { } - — \$ ¢ £ ¥ f * † ‡ § ¶ i ÷

ÉÈÊËĚĚĚĚĚéèêëěěě

Times Roman

abcdefghijklmnopqrstuvwxyz ff ffi ffl fi fl æœǎçþłøß
ABCDEFGHIJKLMNOPQRSTUVWXYZ
&ÆĲĀĈĐPŁØ@ 1234567890
.,:; ‘ ’ “ ” « ‹ › » ! ? - () [] { } – — \$ ¢ £ ¥ f * † ‡ § ¶ i ÷
É È Ê Ë Ì Í Î Ï Ę Ě ě è ê ë ã ä å

Times Italic

*abcdefghijklmnopqrstuvwxyz ff ffi ffl fi fl æœǎçþłøß
ABCDEFGHIJKLMNOPQRSTUVWXYZ
&ÆĲĀĈĐPŁØ@ 1234567890
.,:; ‘ ’ “ ” « ‹ › » ! ? - () [] { } – — \$ ¢ £ ¥ f * † ‡ § ¶ i ÷
É È Ê Ë Ì Í Î Ï Ę Ě ě è ê ë ã ä å*

Times Bold

**abcdefghijklmnopqrstuvwxyz ff ffi ffl fi fl æœǎçþłøß
ABCDEFGHIJKLMNOPQRSTUVWXYZ
&ÆĲĀĈĐPŁØ@ 1234567890
.,:; ‘ ’ “ ” « ‹ › » ! ? - () [] { } – — \$ ¢ £ ¥ f * † ‡ § ¶ i ÷
É È Ê Ë Ì Í Î Ï Ę Ě ě è ê ë ã ä å**

Times Bold Italic

***abcdefghijklmnopqrstuvwxyz ff ffi ffl fi fl æœǎçþłøß
ABCDEFGHIJKLMNOPQRSTUVWXYZ
&ÆĲĀĈĐPŁØ@ 1234567890
.,:; ‘ ’ “ ” « ‹ › » ! ? - () [] { } – — \$ ¢ £ ¥ f * † ‡ § ¶ i ÷
É È Ê Ë Ì Í Î Ï Ę Ě ě è ê ë ã ä å***

Zapf Chancery Medium Italic

abcdefghijklmnopqrstu vwxyz ff ffi ffl fi fl æ å ç ð ø ß

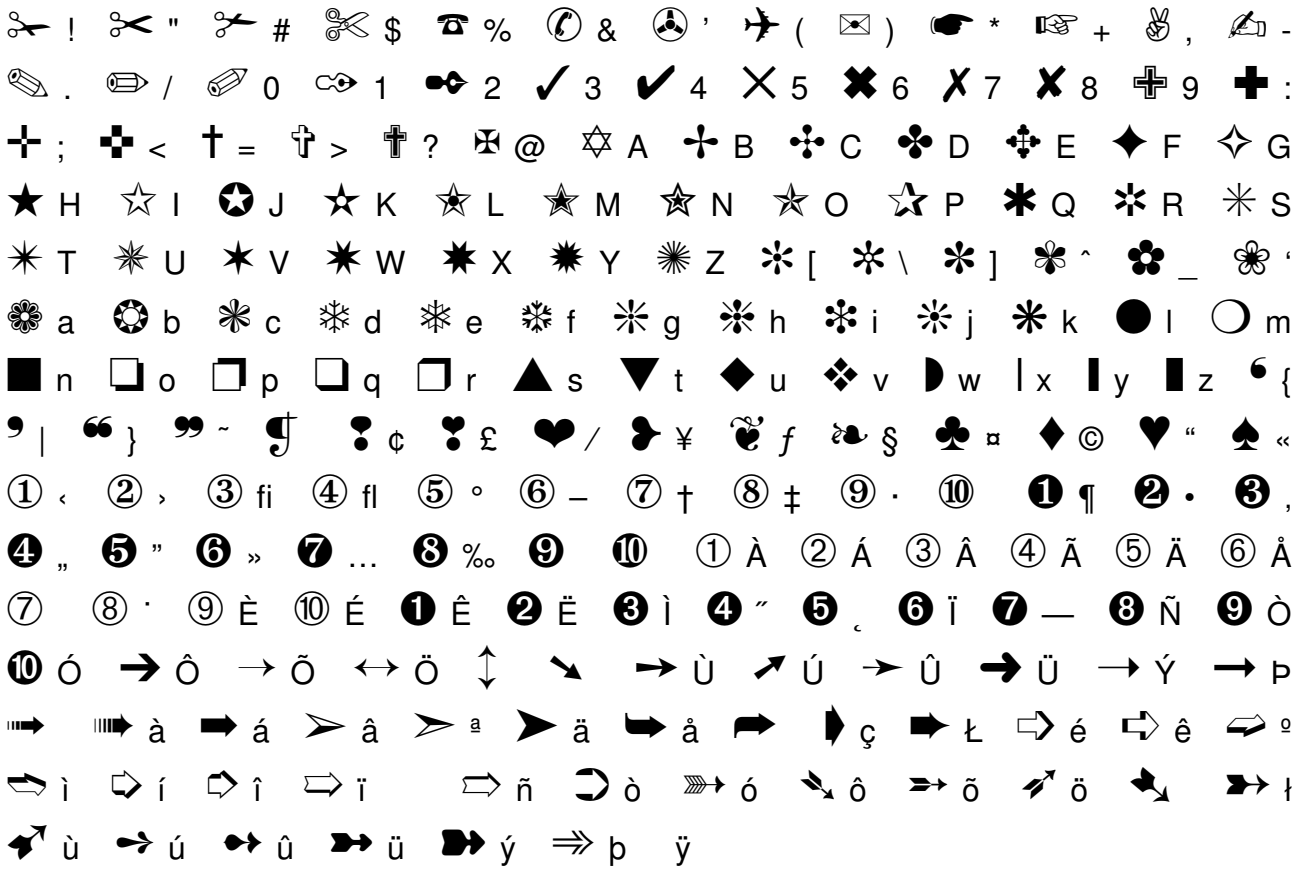
ABCDEFGHIJKLMN OPQRSTUVWXYZ

Œ Æ Å Ç Ð ð Æ @ 1234567890

.,:; ‘ ’ “ ” « » ! ? - () [] { } — \$ ¢ £ ¥ ¤ * † ‡ § ¨ ¨

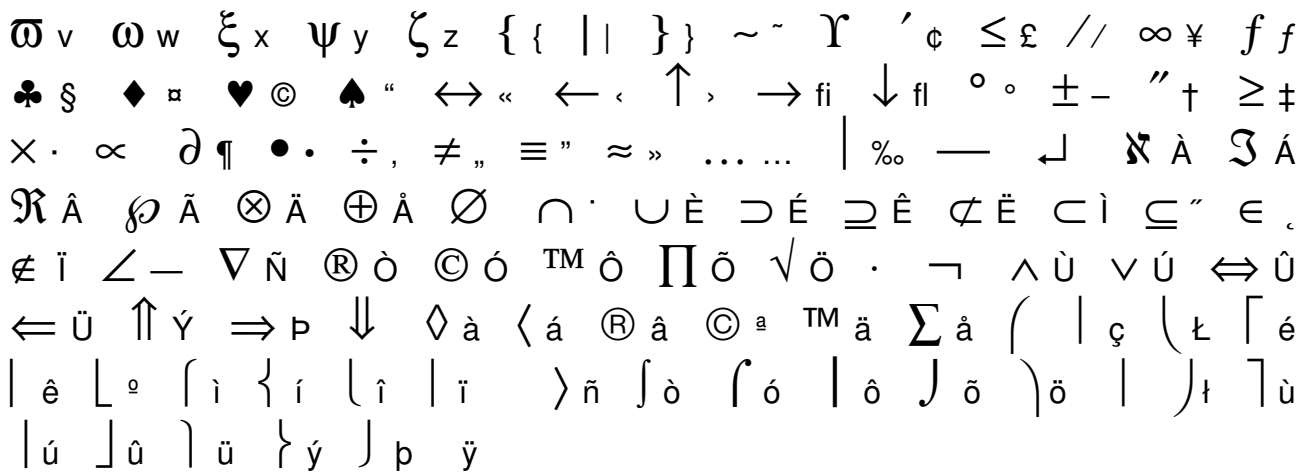
É Ê Ë Ì Í Î Ï È É Ê Ë Ì Í Î Ï È É Ê Ë Ì Í Î Ï È É Ê Ë Ì Í Î Ï È É Ê Ë Ì Í Î Ï

Zapf Dingbats



Symbol

!! ∇ " ## ∃ \$ % % & & ÷ ' (()) * * + + , , - - . . //
00 11 22 33 44 55 66 77 88 99 :: ;; << == >>
?? ≅ @ A A B B X C Δ D E E Φ F Γ G H H I I I J K K
Λ L M M N N O O Π P Θ Q P R Σ S T T Y U ζ V Ω W Ξ X
Ψ Y Z Z [[. : \]] ⊥ ^ _ _ ' α a β b χ c δ d ε e φ f
γ g η h ι i φ j κ k λ l μ m ν n ο o π p θ q ρ r σ s τ t υ u



This file shows the 35 standard Postscript fonts* which URW++ donated to the public in 1996. They are: AvantGarde (4 variants), Bookman (4), Courier (4), Helvetica (4), Helvetica Narrow (4), New Century Schoolbook (4), Palatino (4), Times Roman (4), Zapf Chancery, and two dingbat fonts: Zapf Dingbats and Symbol. Unlike the Computer Modern fonts, these fonts also use codepoints in the extended ASCII range (i.e. between codepoints 128 and 255). Prior to version 3, \TeX could only handle 7 bit input (128 characters).

Not all of the \TeX markup works with these fonts e.g. `\dag`, `\ddag` always produce daggers in `cmr10`, `\AA` doesn't work properly (probably because the plain macros are designed for the metrics of Computer Modern). These and other characters (pound sign, yen symbol, double and single guillemets, section sign, pilcrow sign) I entered using `\char` (see the input file). It would probably be easier to write macros to enter these characters e.g. `\def\pound{\twelvepala\char163}`; `\pound` produces £. Upper case eth (`\char138`) is present in the text fonts, but lower case eth seems not to be.

I printed the dingbat fonts side by side with 12pt Helvetica so you can see the position of each character in the font table. Most of the characters from the lower ASCII range can be entered directly e.g. `{\zapfdtwelve a b G I \ $ \%}` produces ☿ ♁ ♂ ♃ ♄ ♅ ♆. The characters in the extended ASCII range I entered using `\char`. The `\chars` between codepoints 127 and 160 don't produce anything.

Most of the characters in Symbol can be produced by \TeX in math mode:

`!∀#∃%&∞()*+,-./0123456789;:|=ι?≅ΑΒΧΔΕΦΓΗΙθΚΛΜΝΟΠΘΡΣΤΥζΩΞΨΖ[??]⊥_??`
`αβχδελφγηηιφκλμννοπθρστυωξψζ{|}~Υ′ ≤?? ∞?? ♠ ♡ ♣ ♣ ← ← ↑ → ↓ ± ″ ≥ α ∂ • ÷ ≠ ≅ ≈ … |`
`— ?? ℵ ℶ ℷ ℸ ϕ ⊗ ⊕ ⊖ ⊙ ∩ ∪ ⊃ ⊇ ⊈ ⊆ ⊇ ⊆ ∉ ∠ ∇ ? ? ? ? Π √ ⋅ ∩ ∨ ⇔ ⇐ ⏞ ⏟ ⏠ ⏡ ⏢ ⏣ ⏤ ⏥ ⏦ ⏧ ⏨ ⏩ ⏪ ⏫ ⏬ ⏭ ⏮ ⏯ ∫`

The example above has been set with the Times macro by Amit Raj Dhawan (Symbol is designed in the style of Times New Roman). See the font-change [manual](#).

These macros can also be used for small caps: ABCDEFGHIJKLMNOPQRSTUVWXYZ and old style numerals: 0123456789 (the URW++ Times fonts don't have these).

* Or their URW equivalents: URW Nimbus Roman = Times Roman, URW Nimbus Sans = Helvetica, URW Palladio = Palatino, etc.